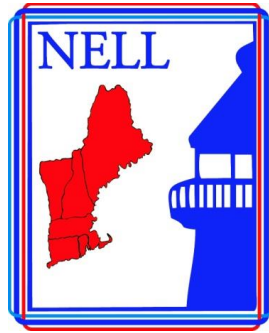


CHAPTER CHATTER



July/August

Happy 4th

NELL Fall Meeting - 11th-13th September

Ladies and Gentlemen we again entreat the gods to give us good weather and fair sailing as we embark on what most would consider an ocean voyage. Matinicus Rock Light is 18 miles off the coast of Maine. It is famous for the exploits of Abbie Burgess, a lighthouse keeper's daughter, who kept the light burning for several weeks during winter storms while her father was trapped on the mainland.

The first day, Saturday September 12 we will be visiting Whitehead Island. Whitehead contains the Whitehead Lighthouse and Lightsaving Station. NELL recently authorized a donation to repair the lens room. The keeper's cottage has sleeping quarters and has been visited by several members of NELL. The island also hosts a summer camp for underprivileged youth. We are in negotiations to visit the island to climb the lighthouse, visit the lifesaving station and camp and partake in a cookout.

I have also learned that Maine is having a Lighthouse Open House Day on Saturday. The details are included in the attached link; <http://www.lighthousefoundation.org/maine-open-lighthouse-day/>

On Sunday we will be taking the Laura B, run by the Monhegan Boat Line out of Port Clyde, ME leaving at 8:00AM. The boat holds approximately 93 people and we are looking to come close to meeting that number. Due to previous commitments by the boat line SUNDAY was the only available time for this charter. Coffee and tea will be available on board in the morning. You can bring your own lunch on board or we are looking to contract a brown bag lunch. The trip will include views of Marshall Point, Two Bush Light, Tenants Harbor Light, Whitehead Light and Matinicus Light. The tour indicated we will be back at Port Clyde by 2:00PM.

We are also trying to secure lodging at the Trade Winds Inn in Rockland, ME for the weekend:

<http://www.tradewindsmaine.com/>

Directly across the street from the Trade Winds Inn is the Maine Lighthouse Museum. One of the premier lighthouse museums on the East Coast it is a must see for all who visit the Mid-Coast area of Maine.

Costs and final details will follow in an email once everything is confirmed.

Bill Kent
President

Happy Birthday

Randy Miller	7/04	David Schulman	7/05	Reg Kitching	7/07
Linda Jacobson	7/10	Lee Olson	7/12	Jeremy D'Entremont	7/13
Pat Bandoek	7/15	Tracie Carpenter	7/15	James Cope	7/17
Tom Chisholm	7/17	Odette Kent	7/24	Darlene Chisholm	7/30
Lauren Liebrecht	8/01	Paula Liebrecht	8/01	Elinor DeWire	8/03
Bill Newblom	8/04	Strickland Hyde	8/07	Bob Kepple	8/09
Nancy Younger	8/09	Marguerite MacDonald	8/11	Geraldine Powell	8/12
Harry Hine	8/13	Ellen Scott	8/17	Bill Younger	8/18
Ron Bandoek	8/30				

Anniversary Wishes

Bill & Judy Newblom	7/9	Norm & Cynthia Bosse	7/23		
Bob & Ellen Granoth	8/10	Reg & Maureen Kitching	8/11	Tom & Darlene Chisholm	8/16
Lee & Judy Hall	8/17	David & Jessica Schulman	8/20	Sandy & Janie Coates	8/23
Frank & Carolyn Carbone	8/24				

Other Lighthouse Happenings

Wood Island Lighthouse is now open for the 2015 season. Open daily from 9:30-6:00 (last tour ticket sold at 5:30). Lots and lots of great crafts in our gift shop! Come on in and check it out!

Muskegon South Pierhead Light opened for regular public tours for the first time since it was constructed in 1903. It will be open for tours from Memorial Day to Labor Day, Saturday 10am - 2pm, Monday & Tuesdays 12noon - 4pm.

Grand Traverse Lighthouse Museum opened a new exhibition on Saturday 23rd May, featuring Lake Michigan Aircraft Carriers and the U.S. Coast Guard 225 years of service.

For more information, call (231) 439-0987 or email donhengesh@aol.com.

Burnt Island Courses and Workshops, 2015. The Maine Department of Marine Resources invites you to enroll in our educational workshops and courses at the Burnt Island Light Station in Boothbay Harbor, Maine. The inspirational beauty of this island will bring out the artist, writer, and experiential learner in you.

- **June 29th-July 3rd – Into the Field with Watercolors** is an introductory, week-long course. As “plein air” artists, participants will use both transparent and opaque watercolor techniques to capture the spirit and essence of the Burnt Island landscape.
- **July 20th-23rd – Supporting Learners with Autism & Developmental Disabilities through Ocean Science** is a three-day workshop offered in cooperation with the Margaret Murphy Center for Children in Auburn.
- **July 27th-31st – Island Color in Silk** is a week-long course that will introduce several silk application techniques. The experience will bring out the artist in everyone – no artistic training or skills are required.
- **August 4th-6th – Writing by the Sea** is a three day workshop offered in cooperation with the Southern Maine Writing Project. Surrounded by the spectacular sights and sounds of the sea, writers and writing teachers will be treated to the supreme luxury: time and space to compose.

<http://maine.gov/dmr/burntisland/courses/index.htm>

Don't Forget – National Lighthouse Day – 8th August

International Lighthouse News

New Visitor Centre ready to open at Portland Bill Lighthouse



The exciting new Portland Bill Lighthouse Visitor Centre has been completed by Trinity House and welcomed its first visitors in March 2015.

Trinity House—the General Lighthouse Authority for England, Wales and the Channel Islands—has taken on this project with the help of its Maritime Charity to highlight to the public the importance of the sea to island Britain today and the fascinating history of its aids to navigation.

The newly-refurbished visitor attraction occupies the ground floor of the former lighthouse keepers' cottages next to the lighthouse.

Since 1716 a number of lighthouses have exhibited a light from Portland to guide vessels through the hazardous race to Portland and Weymouth as well as along the English Channel; the present lighthouse dates from 1906 and was manned until 1996.

The new visitor centre seeks to showcase the history of the Portland Bill Lighthouses and also tell the story of the lives of the Trinity House lighthouse keepers. The exhibition extends to the history and development of Trinity House and its lighthouses in general and the future of satellite-based aids to navigation. Visitors can also learn about the history of Trinity House, which celebrated its 500th anniversary in 2014, and its wider modern duties and responsibilities as a major maritime charity and aids to navigation provider.

Comprising the exhibition is a number of artefacts from the Trinity House collection to accompany the graphic displays as well as interactive displays to engage the younger audience.

A visit to the centre can be completed by ascending the Grade II Listed lighthouse to take in the panoramic views of the world famous Jurassic Coast.

The refurbishment was made possible by a grant from the Trinity House Maritime Charity, which seeks to educate mariners and the general public about the importance of safe navigation at sea, as well as provide support and training for mariners.

Trinity House's Executive Chairman Captain Ian McNaught said of the new visitor centre:

"It is great to add another element to the diverse range of platforms we use to engage with the public and inform them about the work that we at Trinity House do and of the importance of the sea to an island nation where over 95% of the goods imported or exported travel by sea. To be able to do that at a location as beautiful as Portland Bill is a very welcome advantage."

Turnberry lighthouse plans get approval



Turnberry's iconic lighthouse is all set to be turned into a halfway house after plans were approved by South Ayrshire Council. The Trump Organisation submitted plans to the council in February and now they have been approved by planners. The development is set to turn the lighthouse into the 'greatest halfway house in the world' according to Eric Trump, the son of Donald Trump.

Speaking to the Gazette, Eric said: "I'm incredibly excited and I'm delighted the plans have got approval.

"Once the work is done this place is going to look absolutely incredible.

"We've been working with the Northern lighthouse board who are unbelievable people who have been very supportive of our plans for the lighthouse and elsewhere at Turnberry.

"It's going to be the best halfway house in the world with two Presidential suites for people to enjoy a wonderful stay in." Eric said he and his father targeted the lighthouse straight away upon purchasing the resort last year.

"There's no doubt that this was a priority for us. "I was watching The Masters and they were showing flashbacks to other tournaments and there you have Jack Nicklaus walking down the fairway with the lighthouse in the background.

"It is an image that is seen all over the world and the history and prestige of that whole area cannot be understated.

"You've got the castle and Robert the Bruce, the Ailsa Craig and the Ailsa Course and that simply can't be touched in terms of how special it is.

"My father looked at the halfway house that had been built close to the lighthouse and we thought 'why isn't this halfway house in the lighthouse itself?'

"With the changes we are making to the 9th hole, it's going to work out perfectly for golfers and visitors and the halfway house will be a true masterpiece."

Transformation plans are set to get under way shortly, but Eric says it's not a huge issue if it isn't all completed by the time the Women's Open comes to the resort at the end of July.

"A lot of the interior design work will be in place by that time but it isn't necessary for it all to be done by the Women's Open but it will be done not long after that."

Trump addressed the Ayrshire Chamber of Commerce dinner last month as he outlined more of his grand vision for the resort.

He also gave a presentation to Turnberry golf members about his plans for the Ailsa Championship course, along with renowned architect Martin Ebert, which the Gazette understands was very well received by those in attendance.

The clubhouse has undergone a refurbishment programme of £5m and is set to re-open its doors next week at which time Donald Trump will be over at the resort as part of a promotion day for the Women's Open.

New conference rooms have also recently opened as plans continue.

Happisburgh Lighthouse is shining bright once more as it celebrates 25 years of independence in August this year



Plans are afoot for a number of celebratory events, including a 200m Zip Slide event travelling at 35mph from the top of the lighthouse to the site of the original Low Lighthouse on the cliff top.

Established in 1791, Happisburgh Lighthouse operated with its twin Low Lighthouse until the 1880s when advances in technology made the Low Light obsolete and it was subsequently demolished.

In 1988 the remaining lighthouse was threatened with closure, but following a campaign within the village and an Act of Parliament, operation of the lighthouse was formally handed over from Trinity House, the main lighthouse authority in England and Wales, to the Happisburgh Lighthouse Trust in August 1990.

Happisburgh Lighthouse facts and history

The lighthouse is painted white with three red bands and has a light characteristic of Fl(3)30s (three white flashes, repeated every 30 seconds) at a height of 135ft (41.1 m) with a range of 14 miles (22.5 km).

The late Queen Mother formally handed over the lighthouse from Trinity House to the Happisburgh Lighthouse Trust in 1990.

In August 1990 the lighthouse was painted from top to bottom on the popular BBC television series, Challenge Anneka, pictured.

The Princess Royal became the new patron of the lighthouse in January 2009. She paid a visit in 2010.

It was used as the location for the video of singer Ellie Goulding's 2010 song The Writer.

Norfolk Amateur Radio Club ran a special event station at the lighthouse in 2012 with the height of the lighthouse and its proximity to the sea helping to launch the radio signals into the ionosphere.

Patrick Tubby, chairman of Happisburgh Lighthouse Trust said "We're delighted that the trust has been operating the light for the last for 25 years, and it's still shining brightly.

"The trustees are supported in their efforts by the Friends of Happisburgh Lighthouse – all supporters are volunteers, and I'd like to pass on my thanks to all those who have given up their time to keep the lighthouse operational over the last quarter century."

To raise vital funds they are planning a series of celebrations, culminating with the Happisburgh Lighthouse Zip Slide Challenge on October 10 and 11.

Over Easter they will also be holding open days on Easter Sunday and Easter Monday, visitors must be a minimum of one metre tall to climb the tower.

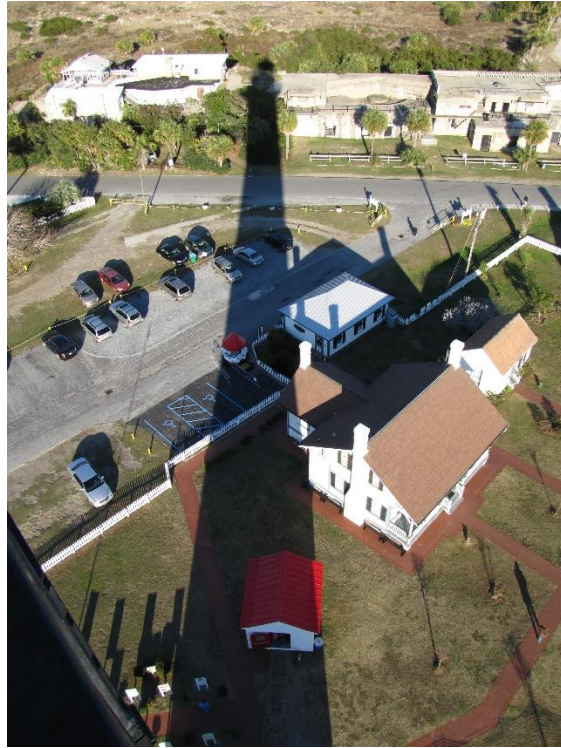
The trust is looking to raise £25,225 over the year, representing 25 years of independence and 225 years of continuous operation, from when both Happisburgh Lighthouse and the Low Lighthouse were first established.

It costs approximately £8,000 a year to keep the lighthouse working. Currently work is taking place to repair the underside of the stairs, which will cost around £25,000.

Mr Tubby said: "It's important to keep this maritime icon working – as well as being an important navigation aid, it also helps to bring a lot of visitors to the village, and on open days they can enjoy 25 miles of coastal views from the lantern room."

For further details about open days throughout the spring and summer, the zip challenge and about becoming a volunteer, visit www.happisburgh.org/lighthouse

Just for fun....can you guess the light?



If you think you know you can e-mail me.
(Answer next Chapter Chatter)
Last edition's answer: Sankaty Head, MA

Please Note:

We are looking for **volunteers** who are interested in serving on committees, those who have good ideas for lighthouse preservation, fund raising, suggestions on improving the operations of the club, or just getting more involved. Please contact Bill Kent: bktwo@comcast.net or 1(978) 809-7133.

The Lighthouse Digest – For each subscription, please use the subscription envelope that you can get from NELL's 2nd VP Lynne Kerber, or the form on the NELL website. Mail with check to Lighthouse Digest, ATTN: Kathleen Finnegan, P.O. Box 250, East Machias, ME 04630. Be sure to write NELL in the memo section of your check and NELL will receive \$10.00 per subscription to go toward restoration and preservation of lighthouses.

The NELL Beacon wants your stories too, send with pictures to Lynne Kerber: lighthousecats@comcast.net for publication. The NELL Beacon is our official club newsletter and will be published three times a year in time for our events. Deadline for the LHC&Y issue will be mid December, for the Spring Event issue mid April and for the Fall Event issue mid August.

If you know of a member that needs **some cheer, get well wishes, condolences or congratulations**, please let Cynthia Bosse - Sunshine Chair know at: bossnjc@sbcglobal.net or call 1(860) 688-7347.

If you have any **knowledge of an upcoming event or news to share**, please send it to me: chapterchatter@outlook.com
All articles and information must be received by the 25th of the month prior to make the publication.

Please let me know your **birthday** (month & day only) and **anniversary** so I will be able to recognize you on your special day in our monthly Best Wishes section.